

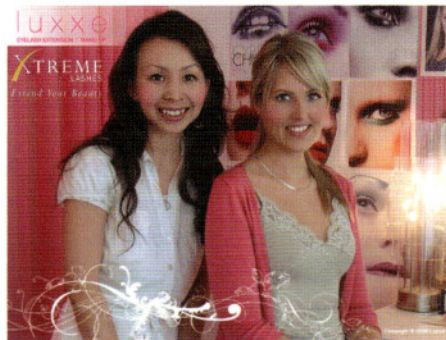
a fabulous new trainer, Jody, who has been travelling around Australia to Spas, updating them on Spa treatments and continuing the therapists' enthusiasm for their unique organic products and treatments. Phyt's have had very positive feedback about Jody - her approach to training is very effective and the girls just love her.

On-site training is available to all new accounts, and regular trainings are held in Queensland, Sydney and Melbourne, which all stockists are invited to attend free of charge. Contact Christine McLachlan or Paul Massa, on 1300 656 627 or 02 9719 9554, email: [info@phyts.com.au](mailto:info@phyts.com.au), visit [www.phyts.com.au](http://www.phyts.com.au).

### OmVeda Herb and Petal Ritual

Fully explore the traditions of the Ayurvedic world, understanding its origins, concepts and powerful therapeutic and aesthetic effects. OmVeda provides full training and support for its unique treatments such as the OmVeda Herbal Petal Ritual that cleanses, detoxifies, nurtures and nourishes while working to reduce the orange peel effect and improve circulation. Leaving skin lustrous, the ritual combines the OmVeda Signature Massage, a gentle exfoliation using a herbal powder of finely ground rosa centifolia, orange peel, white sandalwood and turmeric and finishing with the Rehydrating Body Lotion. The body is massaged using the OmVeda Koporadhi Oil formulated with camphor, aloe vera, amla and wheatgerm set in a base of lush black sesame oil. Helping to decongest sluggishness, improve circulation, strengthen and tone muscles and tissues. Out-

wardly nourishing the skin, inwardly calming the system. Ayurvedic herbs and petals are blended with organic yoghurt, mixed into a paste and coated onto the body and left for up to twenty-five minutes. Organic milk is patted over the body then gently exfoliated off using circular motions. Finally, the skin is treated to a hydrating and replenishing massage using the Body Lotion, a mix of White Lily and Rose Petals. Contact OmVeda on 1300 662 383 or visit [www.omveda.com](http://www.omveda.com) for more information.



### All A Flutter

As pictured, Xtreme Lashes® stylist Sereelou from Luxxe Melbourne busily caters her talents to the many women attending some of Melbourne's greatest events. Chairman's Club Manager of the Victorian Racing Club Kelly Walters wears Xtreme Lashes throughout the Spring Racing season and into the festivities of the New Year. As the weather gets warmer so do the lashes. Sereelou incorporates layers and colours to highlight her clients' best features.

Forget all you know about lash extensions. These are not the generic eyelash extensions of yesteryear: Xtreme Lashes® are custom styled to suit each individual's look, outfit or special occasion. Advanced techniques such as layering, feathering and eyelighting were developed by Xtreme to add a different shape to the eye, emphasise iris color and highlight other facial features. Constant research and development has allowed Xtreme Lashes® to formulate the safest possible application to yield the most flawless results. Training Director Noor Daoudi describes the new Xtreme Lashes® looks as "mini sculptured works of art that defy the old rules and trends that have become too routine in such a creative trade". Xtreme Lashes® is truly synonymous with effortless beauty; women from all ends of the spectrum can benefit. Founded by Jo Mouselli RN, the original goal was to provide the modern woman with a beauty treatment

